



WOODLAND CULTURAL CENTRE DONOR NEWS

In This Issue...

Message From our
Executive Director

Celebrating 50 years and
looking ahead to next 50

Great Canadian
Giving Challenge

Learn how you can support
WCC this June

And more...

Why Support Woodland, A Message From Our Executive Director

JANIS MONTURE, EXECUTIVE DIRECTOR

2022 is an exciting year here at the Woodland Cultural Centre as we celebrate the 50th Anniversary of the organization. As Woodland has now finished the Save the Evidence campaign, the focus is now looking forward to the next 50 years.

When Woodland Cultural Centre (WCC) was established in October 1972 by the Association of the Iroquois and Allied Indians, the organization was focused on collecting research and artifacts, to develop its library and museum collections, expanding to include the arts in 1975 and the language program in 1983. With over 35,000 artifacts in our museum collection, the Centre is one of the largest facilities in Canada managed and administered by First Nations.

As a centre of excellence, Woodland Cultural Centre envisions a future where Hodinohsho:ni people will speak their language, know and practice their culture, and share their history. As the organization looks forward, the focus on key strategic priorities will remain of the utmost importance such as: Increase Awareness - Essential to increasing awareness and rebranding the WCC, is the integration of the two buildings and mandates into one educational space with dual functions, ensuring that culture and history are evenly weighed; Support the life-long learning process - To move towards educational programming that makes a personal connection with the general public and advances understanding of, and respect for, Indigenous cultures, languages, histories, rights and perspectives; and Build Strategic and Community Partnerships - Partnering offers a huge opportunity for expanding WCC's capacity beyond its existing modest staff capacity.

The Woodland Cultural Centre strives every year to ensure we meet our community needs and also to facilitate Indigenous and non-Indigenous understanding by providing education opportunities, producing innovative exhibitions, promoting local artists, and creating language resources. WCC does receive operating grants each year from both the federal and provincial governments, but it never is enough funding to properly carry out our programming. The donations received all go towards the programming that Woodland produces such as: Dwaḡwenaga:dat Language Centre (DLC); Museum and Art Gallery; Library; Education and Mohawk Institute Residential School.

All donations continue to assist us to carry out the innovative programming Woodland Cultural Centre presents as we continue to build understanding and dialogue between Indigenous and non-Indigenous communities. The organization is excited to see what the next 50 years brings forth and to expand our footprint in the Canadian arts and cultural landscape.



Janis Monture
Executive Director

At the Woodland Cultural Centre, Final Days of Anong Migwans Beam at Campbell House

Come visit the Woodland Cultural Centre to see this vibrant exhibition by artist Anong Migwans Beam from the Campbell House Museum with Guest Curator Elka Weinstein before it closes on May 21, 2022.

Anong Migwans Beam grew up on Manitoulin Island, M'Chigeeng First Nations Reserve. Beam was born to two artist parents, Carl Beam, and Ann Beam. She was raised with a meaningful connection to both her artistic family roots and her rich ancestral heritage. Her work formats large oil paintings incorporating a multitude of image making approaches, including photo transfer, printmaking and collage which have been inspired by the physical history of her home, the natural landscapes, and the relationship between water and memory. Anong has not only used her homeland as an inspiration for her work but also for creating the actual paints that she uses.

"For this exhibition I have created 6 large format oil on canvas paintings, and a small series of water colour studies. In these works, I will be developing from a theme that has emerged in the past two years in my work. Lolling at my life, and with my mother entering Alzheimer's, I have been painting memories, my practice has always centered around water and how it holds and contains us, and is a silent witness again and again to all events, constantly renewed and present in us as it was for our ancestors" -Anong Migwans Beam.



Artist Anong Migwans Beam with museum guests at our Artist Meet and Greet Event on April 23, 2022



Visit the [Campbell House Museum website](#) for exclusive resources from the exhibition, including videos and a link to download the catalogue! Also check out artist Anong Migwans Beam's website, [Beam Paints](#), to purchase the paints she uses to make her artworks.

Anong Migwans Beam at Campbell House closes Saturday May 21. Our museum is open Tuesday-Fridays 10-3 and Saturdays 11-4, check out [our website](#) for admission details.

We can't wait to see you in the museum!

May is Museum Month!

#MayisMuseumMonth is a program started by the Ontario Museum Association and is an opportunity to celebrate the contributions museums provide to their communities. Come visit the Woodland Cultural Centre this spring! And check out museums, virtual experiences, and special events during #ONMuseumMonth at [museumsontario.ca](#).

Check out these exciting events happening this month



Accessing the Archives, 1924 Through Photos and Documents: A Community Conversation, May 11 at 2PM - [Click here to find out more](#)



#MayisMuseumMonth Virtual Tour Screening of Woodland Cultural Centre Museum, May 17 at 7PM - [Click here to find out more](#)

Help the Woodland Cultural Centre this June to win \$20,000 for the development of educational curriculum resources in the **Great Canadian Giving Challenge**

Great Canadian
GIVING
CHALLENGE



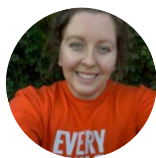
Woodland Cultural Centre is excited to announce our participation in the Great Canadian Giving Challenge in the hopes of winning the grand prize of \$20,000 for the development of new curriculum-based outreach education programs. Funds raised will go to support schools in Six Nations of the Grand River, Wahta Mohawks, and Mohawks of the Bay of Quinte communities, as well as, school boards, and Universities and Colleges.

The Great Canadian Giving Challenge happens every June and is a month-long fundraising initiative to bring awareness and support to charities. Every dollar donated to WCC in June, via CanadaHelps.org or CanadaHelps fundraising tools, is an entry for a chance to win \$20,000!

Our education department fearlessly took on the challenge to establish virtual educational programs during a time when the world shut down and moved to an online reality. They have been diligently working on creating and implementing the highest quality programs to school aged groups and other organizations. Help us to continue to develop new and exciting programming related to Indigenous cultures, languages, stories, and the impacts of the residential school system.

“Thank you so much for doing this very important work. Speaking truth to power is a bold and courageous act. We cannot have reconciliation without first having truth as the very foundation of all the things we do. I can't begin to express how this work is so needed and so vital, especially during this time.” – Anonymous Tour Guest

Your contribution to the Woodland Cultural Centre this June would support the imperative work being done in the revitalization and celebration of Hodinohsho:ni culture, language, history, and art. Stay plugged in to the Centre for more on the Great Canadian Giving Challenge!



Trisha Kelley
Development Coordinator

Meet Our New Associate Director

My name is Christopher Ashkewe (Chi Noden) and I'm originally from Neyaashiinigmiing First Nation and I've been working as WCC's Associate Director since January, 2022. I've dedicated much of my professional career towards the activation of economic development opportunities for Indigenous communities and people.

Although I am new in my role with the Centre, I have worked here previously as a summer student in the education department as a Cultural Interpreter. I had the opportunity to work with Keith Jamieson on the *Mohawk Ideals, Victorian Values* by Dr. Oronhyatekha Exhibition in partnership with the ROM. We have a big year planned for our 50th anniversary in 2022 and we're working hard to bring new events and programming to the public. Which includes a revitalized virtual tour of the Mohawk Institute and a virtual tour of our Museum.



A Generous New Partnership for *Indigenous Art* at the Woodland Cultural Centre

The Woodland Cultural Centre (WCC) is extremely pleased to announce a new three-year partnership between The Brown Homestead and WCC's premiere exhibition, *Indigenous Art*.

The Brown Homestead will be the title partner for *Indigenous Art* starting with the 2022 addition of the exhibition in September 2022.

One might ask why this partnership makes so much sense? You just have to understand the Mission, Vision, Values and history of the Homestead to recognize the convergence of aspirations. The Mission of the Homestead site is, "Reimagining historic sites as engines of progress and development". The Vision is, "Compassionate communities using innovative thinking and an understanding of their place in history's continuum to build a more harmonious future."

One of the three Values states, "Community Connection: We are relevant to, and make a positive impact in our community. We believe in using heritage sites to create deeper community connections. We practice and advocate personal integrity, mutual respect and valuing difference. Our programming and organizational culture encourage collaboration, conflict resolution, listening, leadership and mentoring."

Andrew Humeniuk, The Brown Homestead Executive Director, states about the partnership, "*The past shows us that artists are often the catalysts of transformative change. Supporting a historic site with a long and distinguished record of working towards a more just and caring society through the arts is one of the most meaningful investments we can make in these challenging times.*"

The Woodland Cultural Centre is very grateful and appreciative of both the financial support and partnership of the Brown Homestead. We look forward to a growing and thriving collaboration.

Brief History of the Brown Homestead:

The Brown Homestead was settled around 1785 by Loyalist John Brown and his family. This historic site features the John Brown House, the oldest home in St. Catharines, a two-storey stone house built in 1802 and incorporating an earlier 1-1/2 storey house (ca. 1796). It is also the home of the Norton Cabin (ca. 1817), built by Mohawk chief Teyoninhokarawen (John Norton), which was moved to the homestead in 1997 to save it from demolition.

The charity was established in 2015 to purchase and preserve the house and to reimagine it as a community gathering place that would serve as an engine of progress and development.



THE BROWN HOMESTEAD



Dean Mitchell, *Frybread*, 2021, digital print

Brief History of the Indigenous Art Exhibition:

The Woodland Cultural Centre continues its seminal contributions in support of Indigenous artists and Indigenous art history in Canada through its annual *Indigenous Art* exhibitions. Many of Canada's renowned Indigenous artists have exhibited in the WCC galleries during their career. The international impact recognizes the legacy of the significant change within mainstream critical discourse through the diversity of artistic practice while maintaining references to material culture; paramount to creating understanding and appreciation of traditional knowledge.

The juried group exhibition, formerly known as *Indian Art*, changed in 1990 to *First Nations Art* and again in 2018 to *Indigenous Art*, evolved from a time when professional Indigenous

artists were denied access to Canadian mainstream gallery exhibitions and acquisitions. In 1969, when the "Indian" policy was at the forefront of the political climate, Indigenous artists collectively became active to advocate for recognition as contemporary professional artists and to deconstruct the canon and break down the barriers.

Tom Hill, former Curator and Museum Director, among others, were instrumental in moving the conversation forward to ensure the inclusion of Indigenous voices were heard nationally and internationally. The first *Indian Art* exhibition was held in 1975 to address the need of providing professional artists a venue to exhibit and sell their work. The first *Indian Art* exhibition at WCC had Indigenous icons such as Daphne Odjig, Norval Morrisseau, Jackson Beardy, Eddy Cobiness, Clifford Maracle, Carl Ray, Goyce and Josh Kakegamic and others.

During his tenure, Tom Hill worked diligently to increase Indigenous inclusion in the mainstream art world. In 1984, the exhibition became juried, and an art catalogue was developed. The catalogue featured the written discourses of Indigenous curators, writers, art historians, and researchers. This platform also provided the opportunity for artists to share their biographies, statements, and lists of works - giving them the much-needed space to further their careers in the mainstream art world.

Significant artworks made their debut in *First Nations Art* such as paintings by Carl Beam, *The North American Iceberg* and Bob Boyer, *A Minor Sport in Canada*. Both, were purchased by the National Gallery of Canada. Major artists that have been featured exhibited in various national and international exhibitions and their works have been collected in private and public collections. Over the years, Tom Hill expanded the WCC contemporary art collection to become one of the largest Indigenous art collections in the country.

The exhibition foundation remains the same. As artist David General noted at the 35th Annual *First Nations Art* 2010 exhibition, "*The significance of the annual Indian Art/First Nations Art exhibitions may not be readily apparent to visitors, but for artists of native ancestry, it is an opportunity to introduce and share the most recent developments in their work. For curators, collectors and Indian Art aficionados it provides an occasion to renew old acquaintances, make initial introductions and develop working relationships that lead to career opportunities for participating artists-both established and proving.*"

Follow the Woodland Cultural Centre on social media for news on *Indigenous Art* 2022.



Melanie Fernandez
Special Projects Manager



Installation View, *Indigenous Art*, 2018



Installation View, *Indigenous Art*, 2018

A New Season of Fundraising for WCC



A Walk Towards Truth fundraising team, October 2021

2021 was an unprecedented year for the Woodland Cultural Centre. We saw an overwhelming amount of outreach and support and we cannot express the gratitude we have for our giving community. An exciting development that came with this support was the increase of community third-party fundraisers. Seeing the passion and hard work that went into these volunteer run initiatives was truly inspiring and we cherished the opportunity to work with these dedicated individuals and organizations.

In March 2022, WCC was thrilled to announce that we had successfully reached our fundraising goal for the Save the Evidence campaign to restore the former Mohawk Institute Residential School. After six years, it's time for Woodland to transition its fundraising focus back to the Cultural Centre. WCC wants to be the premier destination for education and cultural programming and resources, but we need your help!

We would be honoured to have the opportunity to work and collaborate with our third-party fundraisers again this year! [Click here to check out our third-party fundraising form.](#)

What would your fundraising contributions go towards? Your efforts will go towards your choice of our departments and will ensure they can continue to develop and provide programming and resources to our community and the public; they will also ensure that we continue to grow and thrive as a Cultural Centre. Some of these initiatives include:

- Education, which has a critical role to play in educating Indigenous and non-Indigenous people by creating educational programming that makes a personal connection with students and the public and advances understanding of, and respect for, Indigenous cultures, languages, histories, rights, and perspectives.
- Our Arts department that looks after the Museum and Galleries. They are focused in presenting, encouraging and promoting Indigenous Art and working with established and up-and-coming artists.
- The Dwaḡwenaga:dat Language Centre who are dedicated to strengthening, revitalizing, and maintaining First Nations Languages, locally, regionally, and nationally.
- Our Resource Library which is one of the largest Indigenous libraries in the country and our librarian assists with academic research and is working to digitize our archives for easy accessibility, including records from the Mohawk Institute Residential School.

Meet one of our Third-Party Fundraisers

LJ Turtle Aromatherapy, owned and operated by Lisa June and located in Guelph Ontario, sells handcrafted felted diffuser acorns as part of her successful aromatherapy business. Last year, LJ Turtle Aromatherapy raised a generous \$15,200.00



LJ Turtle
AROMATHERAPY

for the Save the Evidence campaign through the sale of these one-of-a-kind diffusers. WCC is endlessly grateful for the community stewardship exhibited by Lisa and the unwavering dedication she has to her craft.



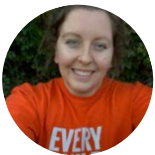
[Click here to visit LJ Turtle Aromatherapy](#) and check out her fundraiser in support of the Dwaḡwenaga:dat Language Centre's Cycle of Ceremonies.

We hope that you all can continue to be a vital part of our giving community and we can't wait to connect with you again this year!

This year, LJ Turtle Aromatherapy is fundraising in support of the Dwaḡwenaga:dat Language Centre's Cycle of Ceremonies project. This series of workshops is geared to Indigenous peoples who have had little to no exposure to the language, culture, and the traditional longhouse community. The Cycle of Ceremonies will be covering the entire cycle that happens seasonally for the remainder of the year - providing a safe environment to learn about ceremonies, sacred and sensitive topics, some of the language involved, ask questions and get clarification from knowledgeable community members and faithkeepers.

"Supporting the Woodland Cultural Centre has special meaning for me. Through my fundraising efforts I have had the opportunity to engage with the public about the legacy of residential schools in Canada. Supporting the WCC has also allowed me to reflect on my own mixed European & Ojibwe roots and traditions as well as my keen interest in languages (I am fluent in French and can get by in Spanish). This year's fundraising activities provide me the opportunity to share about the Cycle of Ceremonies project that dovetails Oḡwehoweh culture, language and ceremony." – Lisa June, LJ Turtle Aromatherapy

Do you have any questions about fundraising? Please reach out to our Development Coordinator, Trisha Kelley at development@woodlandculturalcentre.ca or 519-759-2650 x 232. [Click here to access our third-party fundraising form.](#)



Trisha Kelley
Development Coordinator

Interested in Learning More About Sponsorship Opportunities with WCC?

Woodland Cultural Centre is looking to grow our corporate giving community. As the premier destination to explore, learn, and share the rich histories and contemporary cultures of Indigenous people of the Great Lakes region, the Centre offers a mutually beneficial opportunity for community engagement, joint marketing, and social responsibility.

Help us to continue to develop and provide top quality programming and exhibitions centered in revitalization and celebration of Hodinohsho:ni culture, language, history, and art.

We want to build long term relationships with our partners!

If you have any questions or would like to chat, please reach out to our Development Coordinator, Trisha Kelley at development@woodlandculturalcentre.ca or 519-759-2650 x 232.

[Click Here for a Sponsorship
Downloadable PDF](#)



SUPPORT WOODLAND

Donation Levels

- **\$100 – \$499** -will receive acknowledgement on the WCC website updated twice per year (downloadable PDF)
- **\$500 – \$1,499** -will receive invitation to screening of a special virtual tour event and Q & A session and acknowledgement in the WCC Annual Report
- **\$1,500 - \$4,999** - will receive preview invitation to exhibitions, acknowledgement on the WCC website for the fiscal year period of the donation and invitation to donor recognition event
- **\$5,000 +** - will receive a copy of WCC anniversary and other publications

DONATE NOW!

Woodland Cultural Centre needs your help to ensure that we can continue to develop and provide programming and resources to our community and the public!

Support Woodland

INTERESTED IN HOSTING A FUNDRAISER?

We can't thank our fundraisers enough for all the hard work they put into 2021! We can't wait for the year ahead!

[Click here to access our third-party fundraising forms!](#)

If you're interested in running a fundraiser for the Woodland Cultural Centre, please contact us at 519-759-2650 x 232 or [email here](#)

We are here to support you and we can't wait to work with you!

PAYMENT DETAILS

☐ I have enclosed a cheque (payable to Woodland Cultural Centre)

☐ Donate online (www.woodlandculturalcentre.ca/donate/)

Charitable registration number: 891177990RR0001

Woodland Cultural Centre respects your privacy. We protect your personal information and adhere to all legislative requirements with respect to protecting privacy. We do not rent, sell or trade our mailing lists. The information you provide will be used to deliver services and to keep you informed and up-to-date on the activities of Woodland Cultural Centre through periodic contact. If at any time you wish to be removed from any of these lists, simply contact Woodland Cultural Centre at 519-759-2650 X 232.

With my gift of \$ _____ I am please to support the Woodland Cultural Centre

CONTACT DETAILS

NAME

E-MAIL ADDRESS

STREET NAME

SUITE/APT #

CITY

PROVINCE

POSTAL CODE

PHONE

CELL PHONE

NAME FOR RECOGNITION ON WCC WEBSITE (FOR DONORS \$100 AND UP)